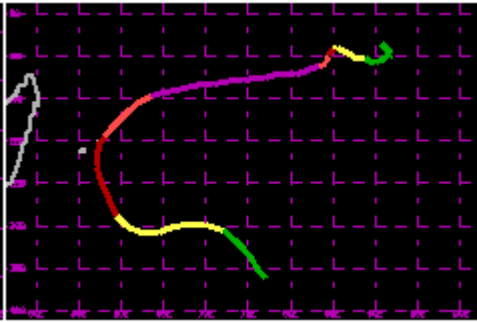
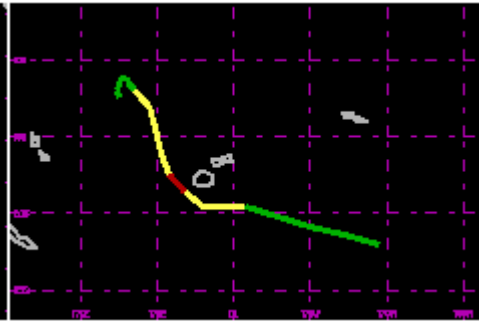


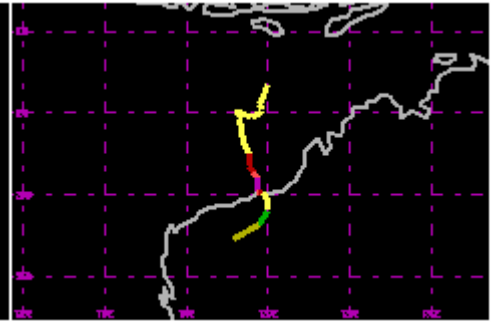
TC 01S Nov/Dec 1979 100kt



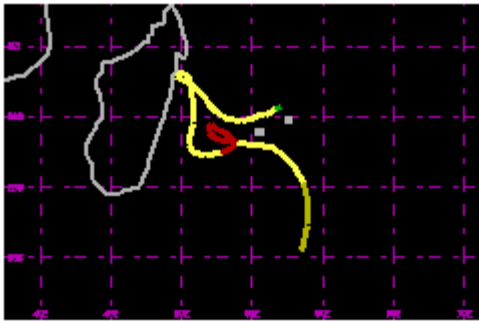
TC 02S Dec 1979 120kt



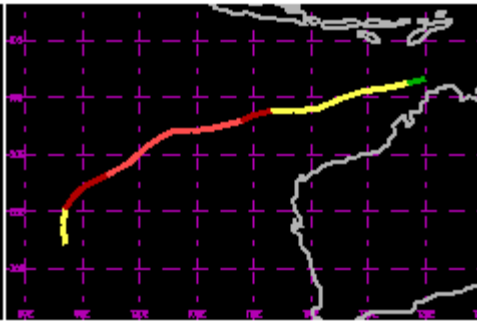
TC 05P Jan 1980 65kt



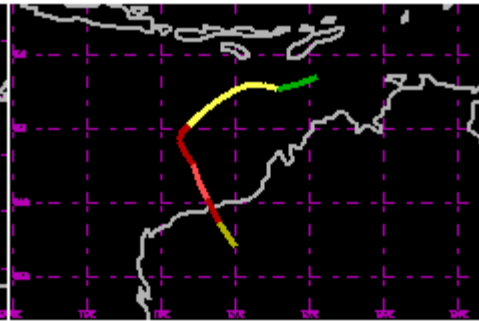
TC 07S Jan 1980 100kt



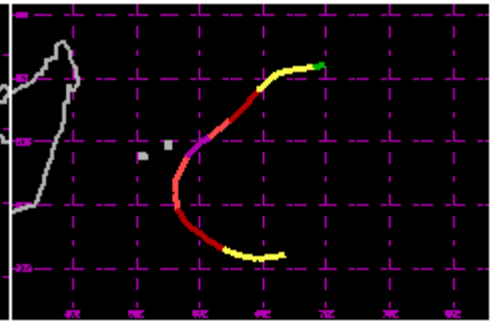
TC 08S Jan 1980 70kt



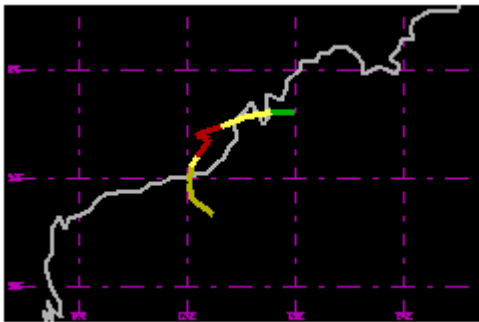
TC 09S Jan 1980 90kt



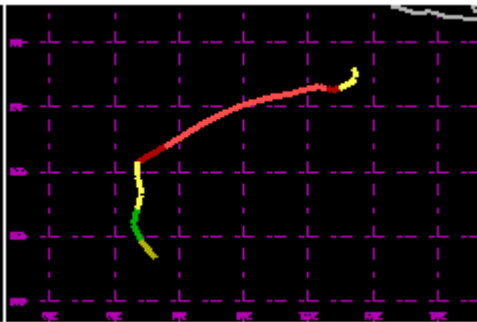
TC 11S Jan/Feb 1980 85kt



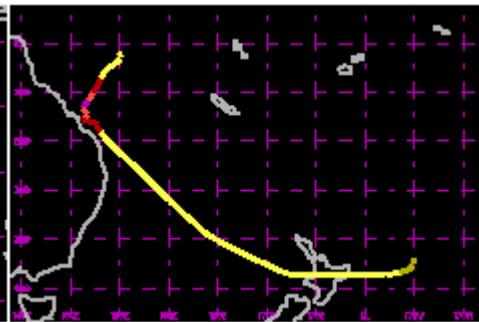
TC 12S Feb 1980 100kt



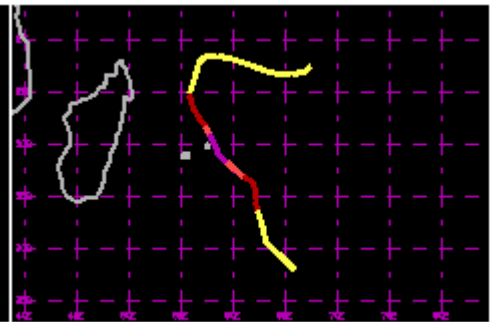
TC 15S Feb 1980 80kt



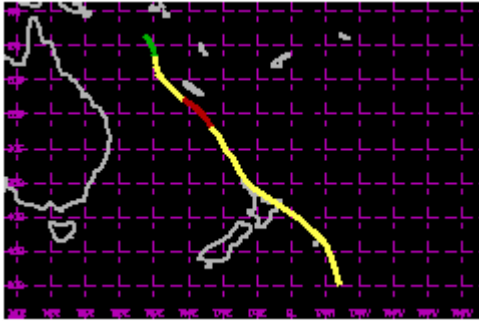
TC 16S Feb 1980 95kt



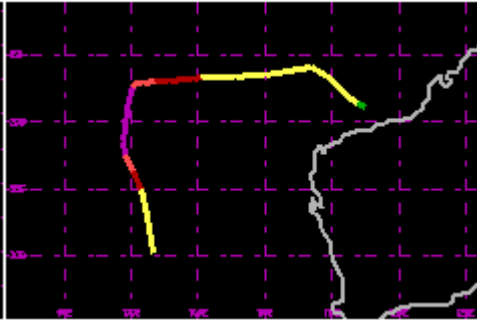
TC 17P Feb 1980 100kt



TC 19S Mar 1980 100kt



TC 20P Mar 1980 70kt



TC 24S Mar 1980 110kt

Start of Hurricane/Typhoon season: Nov/29/79 06utc

End of Hurricane/Typhoon season: Mar/27/80 12utc