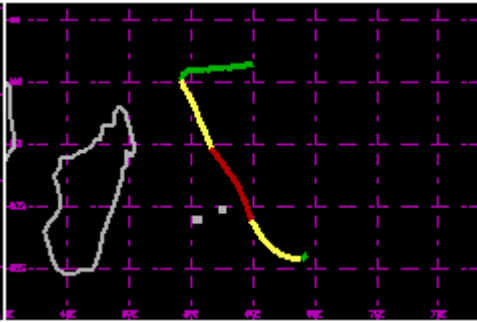
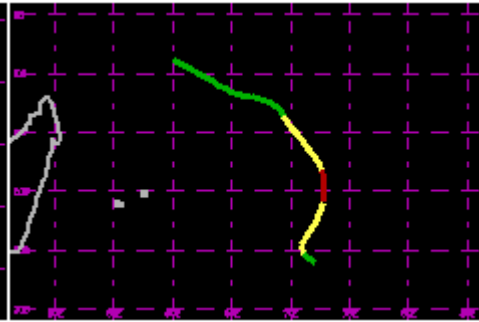


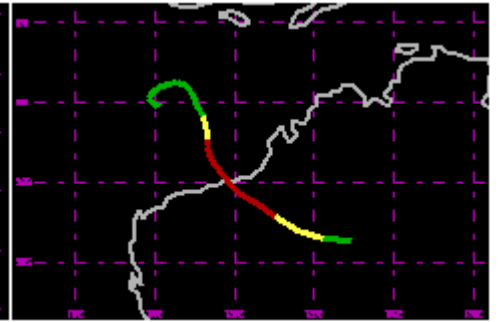
TC 02P Oct/Nov 1982 65kt



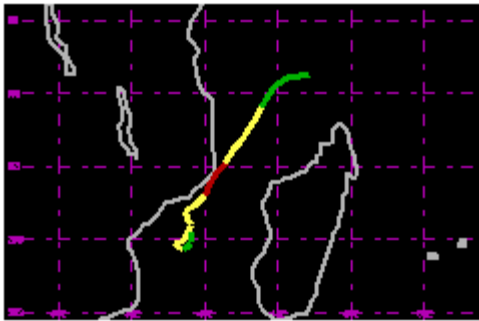
TC 04S Nov/Dec 1982 65kt



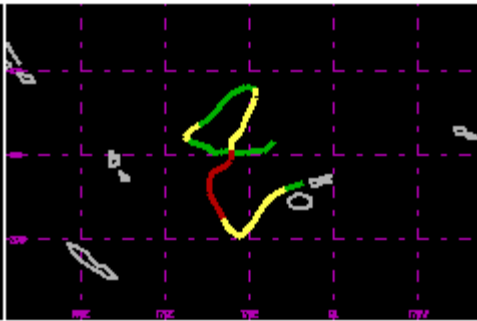
TC 06S Dec 1982 65kt



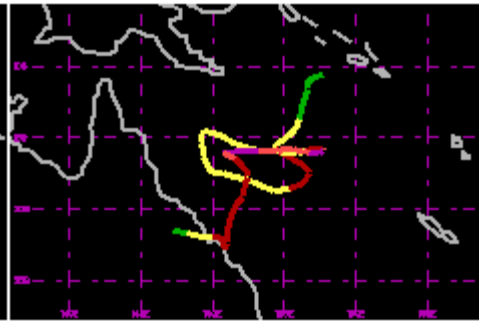
TC 07S Jan 1983 80kt



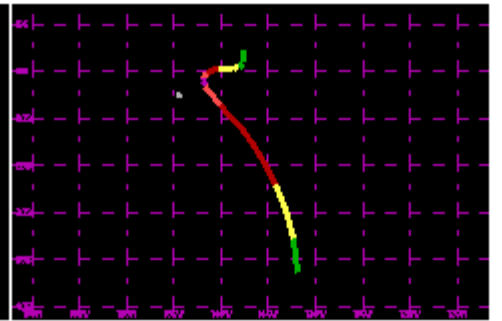
TC 08S Jan 1983 65kt



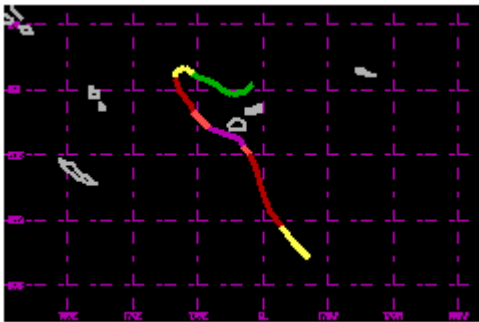
TC 10P Jan 1983 80kt



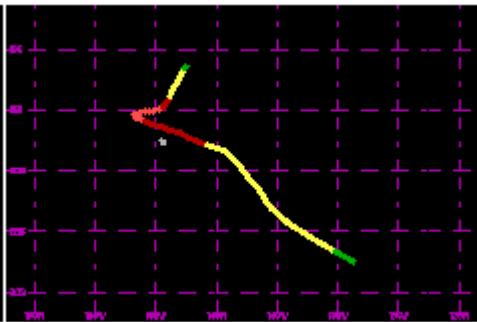
TC 11P Feb/Mar 1983 100kt



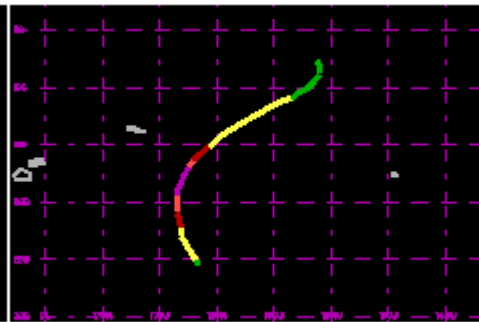
TC 13P Feb 1983 100kt



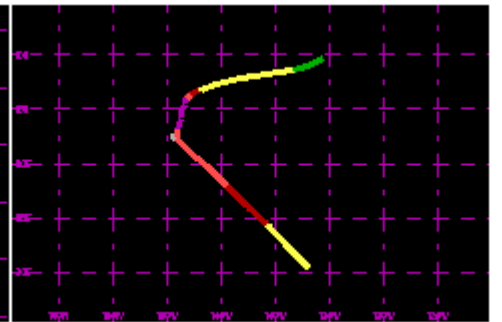
TC 14P Feb/Mar 1983 100kt



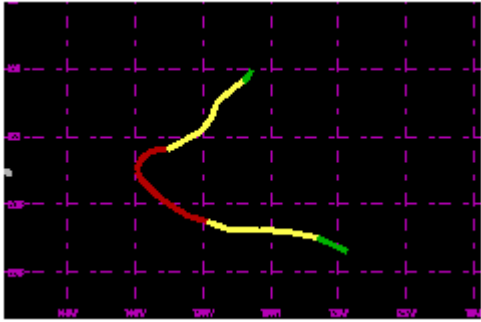
TC 17P Mar 1983 90kt



TC 19P Mar/Apr 1983 100kt



TC 21P Apr 1982 100kt



TC 22P Apr 1983 75kt

Start of Hurricane/Typhoon season: Nov/04/82 00utc

End of Hurricane/Typhoon season: Apr/21/83 18utc