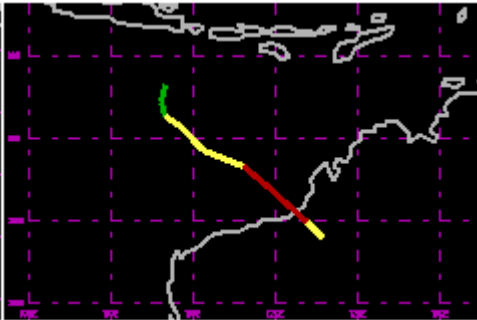
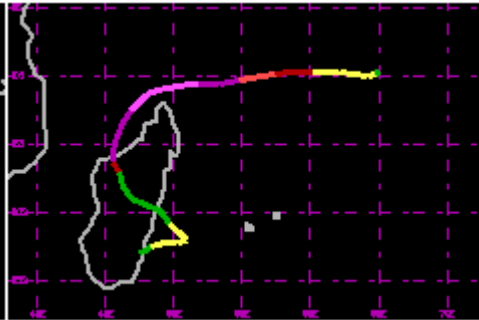


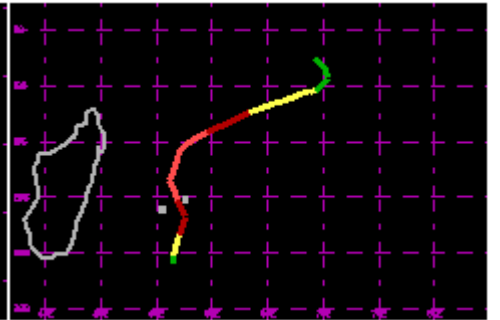
TC 02S Oct 1983 70kt



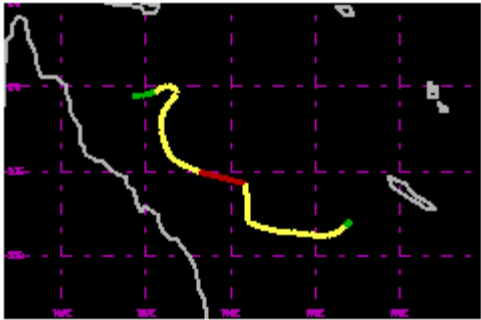
TC 06S Nov 1983 70kt



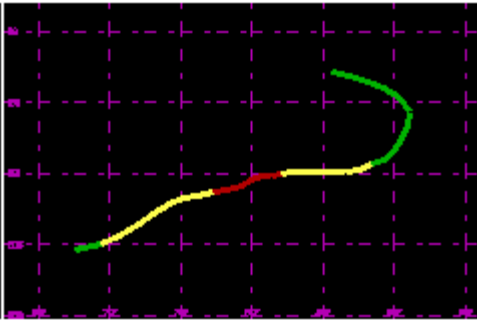
TC 07S Dec 1983 130kt



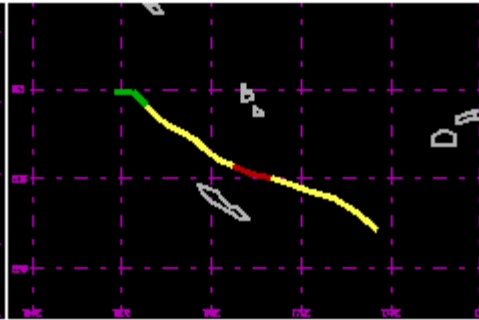
TC 09S Dec 1983 90kt



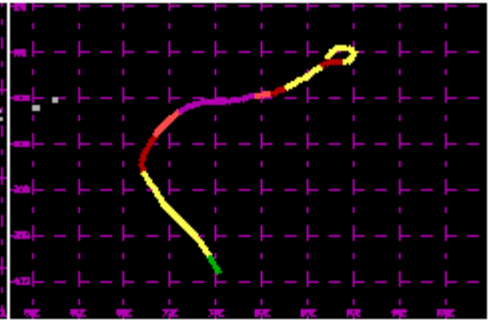
TC 13P Jan 1984 65kt



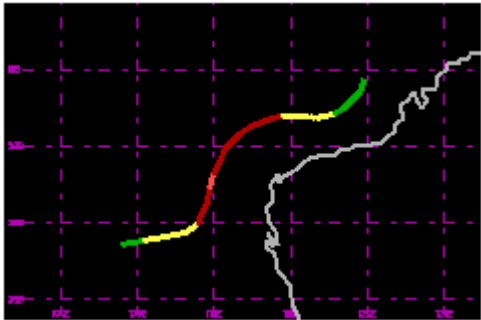
TC 16S Jan 1984 75kt



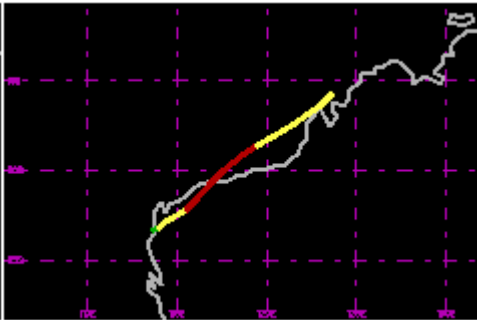
TC 17P Feb 1984 65kt



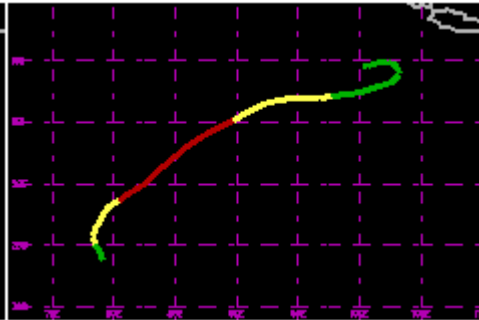
TC 21S Feb 1984 100kt



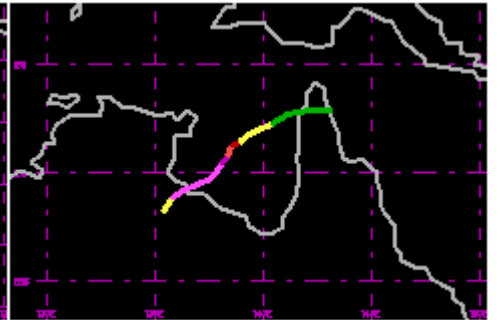
TC 24S Feb 1984 85kt



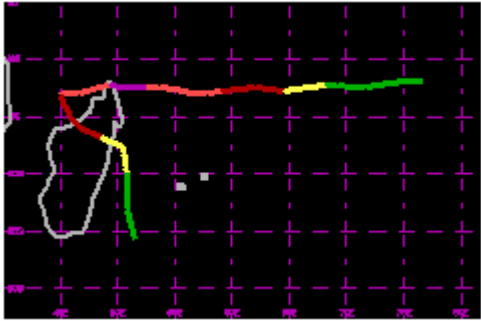
TC 26S Feb/Mar 1984 75kt



TC 28S Mar 1984 75kt



TC 30P Mar 1984 125kt



TC 32S Apr 1984 100kt

Start of Hurricane/Typhoon season: Oct/27/83 18utc

End of Hurricane/Typhoon season: Apr/12/84 12utc